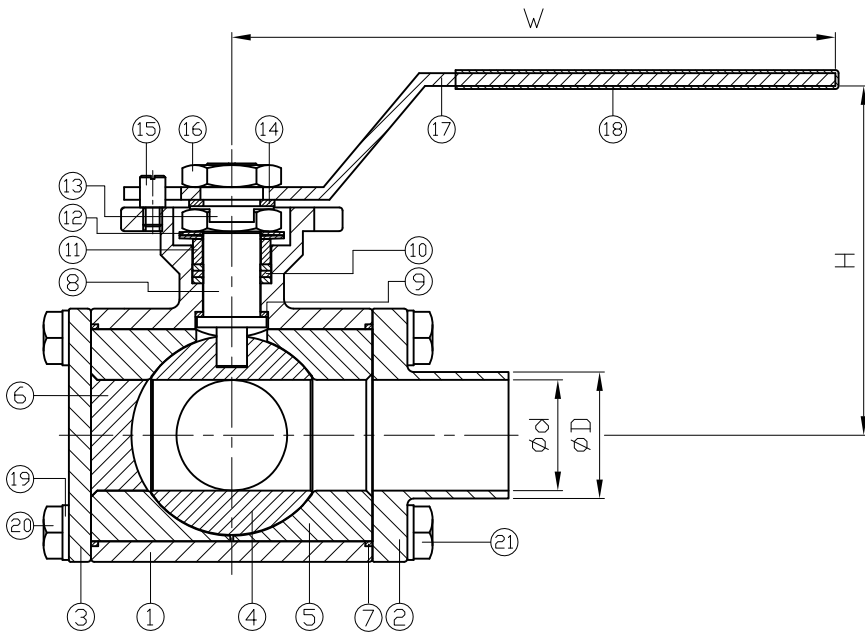


Ra	0.2	1.6	6.3	25	± 0.1	± 0.2	± 0.3	± 0.5	± 0.8
JIS	▽	▽	▽	▽	0.5~5	6~30	31~120	121~320	321~1000
GENERAL TOLERANCE									

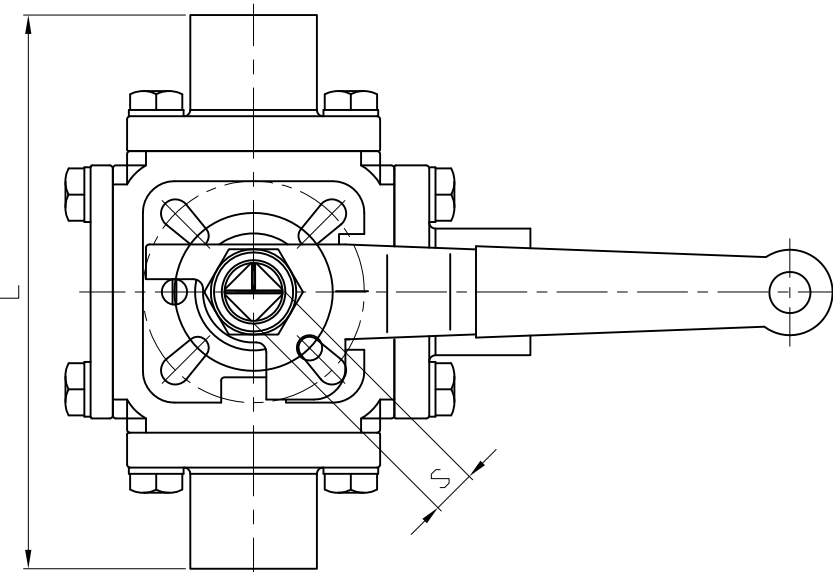
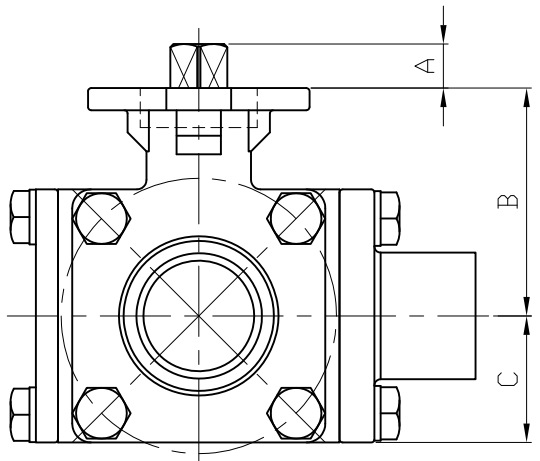


DN	A	B	C	d	D	H	L	S	W	ISO 5211	Torque (N-M)	
											Action	Breakaway
15	9	44.5	23.5	9.4	12.7	79	118	9	122	F03/F04	3	4.4
20	9	48	26	15.8	19.1	82.5	127	9	122	F03/F04	4.4	5.9
25	11	59	30.5	22.1	25.4	91	152.4	11	137	F04/F05	9.5	11.7
40	14	72	40	35	38.1	107	175	14	183	F05/F07	11.7	18.2
50	14	82	50	47.6	50.8	117	190	14	183	F05/F07	20.8	26

NPS	A	B	C	d	D	H	L	S	W	ISO 5211	Torque (in-lb)	
											Action	Breakaway
1/2"	0.35	1.75	0.93	0.37	0.5	3.11	4.65	0.35	4.8	F03/F04	26.5	39.1
3/4"	0.35	1.89	1.02	0.62	0.75	3.25	5	0.35	4.8	F03/F04	39.1	51.8
1"	0.43	2.32	1.2	0.87	1	3.58	6	0.43	5.39	F04/F05	84	103.6
1-1/2"	0.55	2.83	1.57	1.38	1.5	4.21	6.89	0.55	7.2	F05/F07	103.6	161.1
2"	0.55	3.23	1.97	1.87	2	4.61	7.48	0.55	7.2	F05/F07	184.1	230.1

unit:mm

unit:in



Body W.P.: 1000 WOG
 Tube End W.P.: 200 WOG (as per ASME BPE standard)

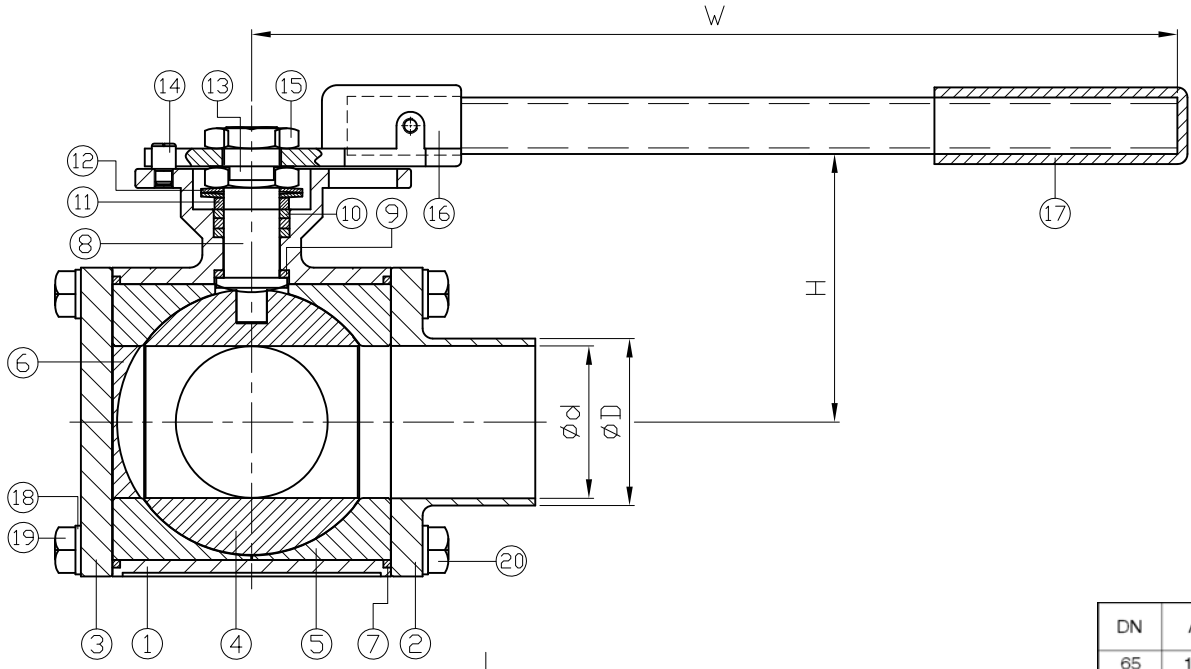
ITEM	PARTS	MATERIAL	
1	BODY	ASTM A351-CF8M	ASTM A351-CF3M
2	CAP		
3	FLAT CAP	ANSI 316	
4	BALL	ANSI 316	
5	BALL SEAT A	PTFE / TFM1600	
6	BALL SEAT B	PTFE / TFM1600	
7	BODY SEAL	PTFE	
8	STEM	ANSI 316	
9	THRUST WASHER	PTFE	
10	PACKING	PTFE	
11	GLAND RING	ANSI 304	
12	BELLEVILLE WASHER	ANSI 304	
13	LOCK WASHER	ANSI 304	
14	FLAT WASHER	ANSI 304	
15	STOP PIN	ANSI 304	
16	STEM NUT	ANSI 304	
17	HANDLE	PVC	
18	HANDLE SLEEVE	PVC	
19	SPRING WASHER	ANSI 304	
20	BOLT A	ANSI 304	
21	BOLT B	ANSI 304	

Delta Stainless Ltd
 www.deltastainless.co.uk

CHECK BY	DRAWING BY	DATE	SPECIFICATION	3 Way Sanitary Tube End Ball Valve
	<i>Eric</i>	Apr.15.2010	MATERIAL	ASTM A351-CF8M
			PROCESS/Nr.	
			UNIT / SCALE	mm

△			
△			
△			
Revise	Description	Date	Approve
DRAWING NO. 2057C-B000HD-10			

Ra	0.2	1.6	6.3	25
JIS	▽▽▽	▽▽	▽	▽
GENERAL TOLERANCE	± 0.1	± 0.2	± 0.3	± 0.5
	0.5~5	6~30	31~120	121~320
			321~1000	± 0.8



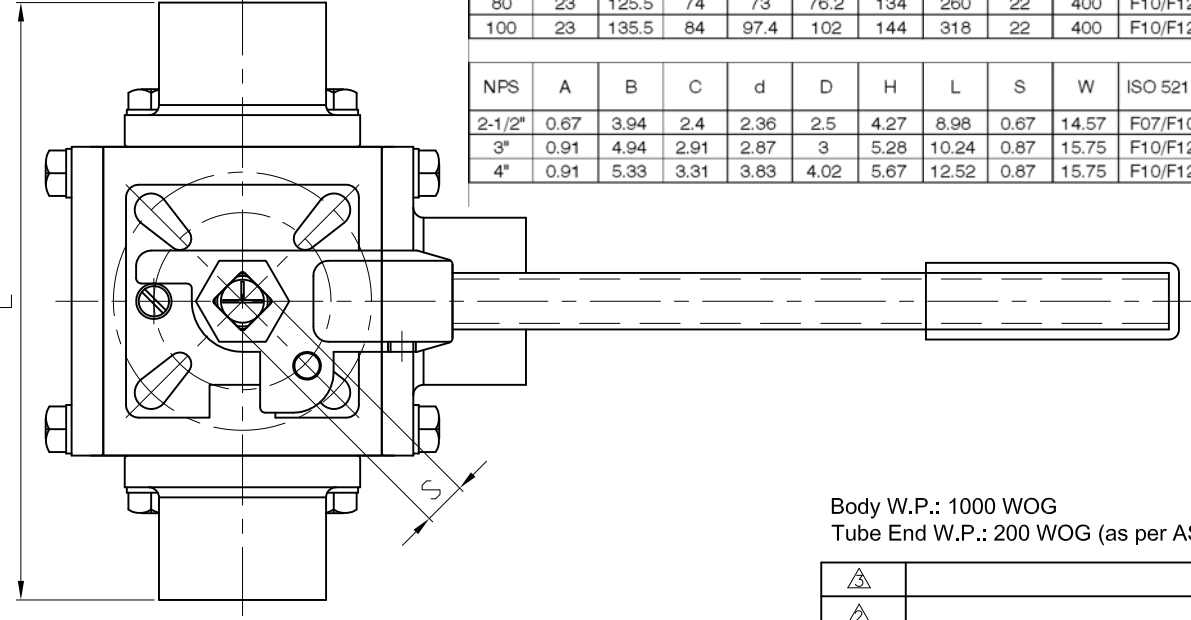
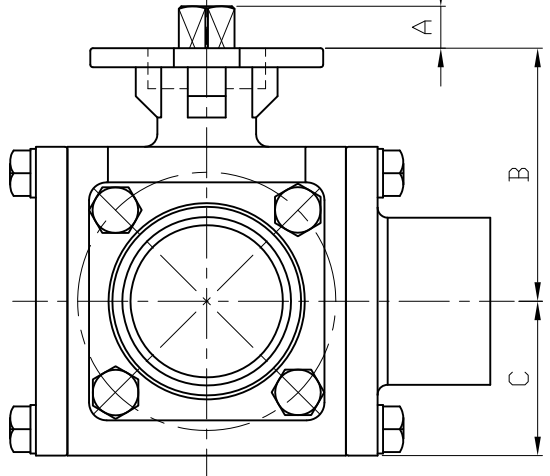
ITEM	PARTS	MATERIAL	
1	BODY		
2	CAP	ASTM A351-CF8M	ASTM A351-CF3M
3	FLAT CAP		
4	BALL	ANSI 316	
5	BALL SEAT A	PTFE / TFM1600	
6	BALL SEAT B		
7	BODY SEAL	PTFE	
8	STEM	ANSI 316	
9	THRUST WASHER	PTFE	
10	PACKING		
11	GLAND RING	ANSI 304	
12	BELLEVILLE WASHER		
13	LOCK WASHER		
14	STOP PIN		
15	STEM NUT	PVC	
16	HANDLE		
17	HANDLE SLEEVE	PVC	
18	SPRING WASHER	ANSI 304	
19	BOLT A		
20	BOLT B		

DN	A	B	C	d	D	H	L	S	W	ISO 5211	Torque (N-M)	
											Action	Breakaway
65	17	100	61	60	63.5	108.5	228	17	370	F07/F10	35.1	65
80	23	125.5	74	73	76.2	134	260	22	400	F10/F12	55.9	106.6
100	23	135.5	84	97.4	102	144	318	22	400	F10/F12	84.5	130

unit:mm

NPS	A	B	C	d	D	H	L	S	W	ISO 5211	Torque (in-lb)	
											Action	Breakaway
2-1/2"	0.67	3.94	2.4	2.36	2.5	4.27	8.98	0.67	14.57	F07/F10	310.7	575.3
3"	0.91	4.94	2.91	2.87	3	5.28	10.24	0.87	15.75	F10/F12	494.8	943.5
4"	0.91	5.33	3.31	3.83	4.02	5.67	12.52	0.87	15.75	F10/F12	747.9	1150.6

unit:in



Body W.P.: 1000 WOG
 Tube End W.P.: 200 WOG (as per ASME BPE standard)

△			
△			
△			
Revise	Description	Date	Approve

DRAWING NO. **2057C-B001HD-10**

Delta Stainless Ltd
 www.deltastainless.co.uk

CHECK BY	DRAWING BY	DATE	SPECIFICATION	3 Way Sanitary Tube End Ball Valve
	<i>Eric</i>	Apr.15.2010	MATERIAL	ASTM A351-CF8M
			PROCESS/Nr.	
			UNIT / SCALE	mm