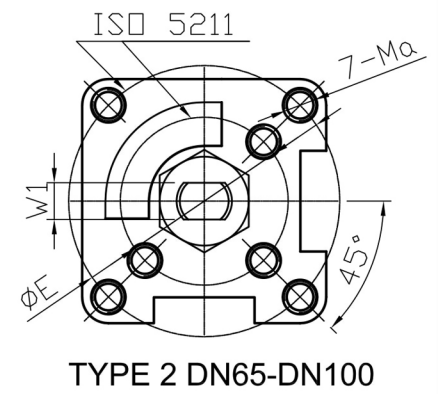
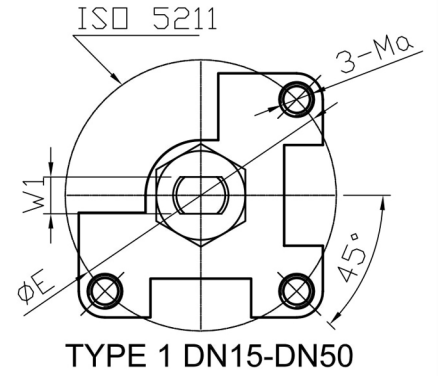
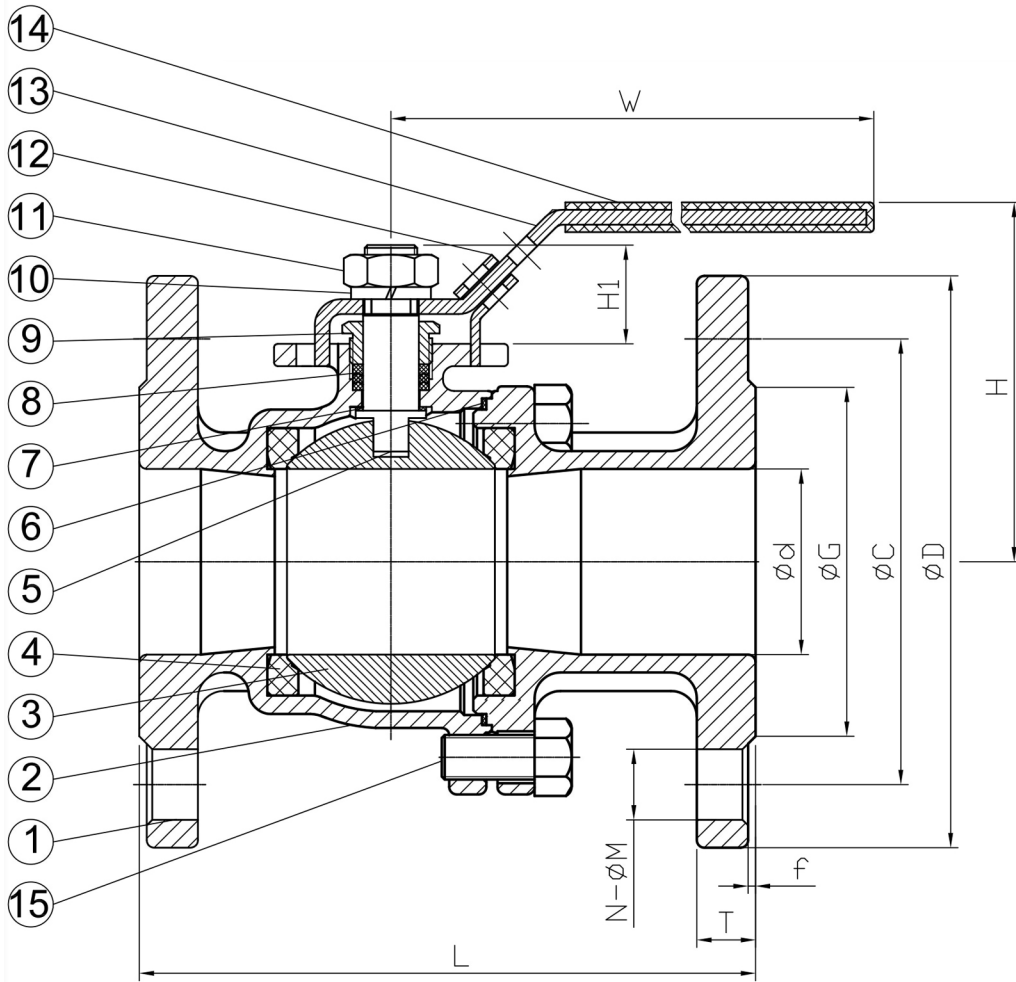


Stainless Steel Flanged PN16 Full Bore Ball Valve

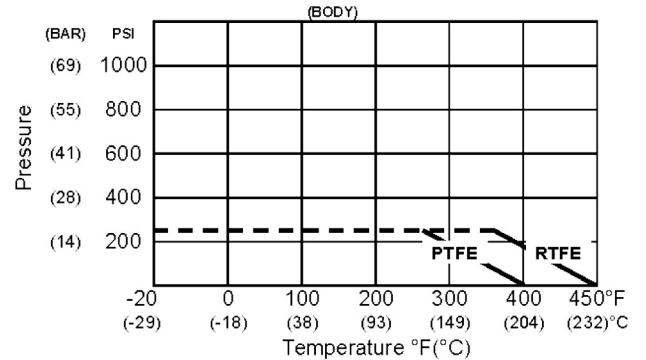


NO.	PART NAME	MATERIAL
1	BODY	CF8M 316
2	CAP	CF8M 316
3	BALL	CF8M 316
4	SEAT	PTFE
5	STEM	SUS316
6	GASKET	PTFE
7	THRUST WASHER	PTFE
8	PACKING	PTFE
9	GLAND	SUS304
10	SPRING WASHER	SUS304
11	STEM NUT	SUS304
12	LOCKING DEVICE	SUS304
13	HANDLE	SUS304
14	PLASTIC COVER	PLASTIC
15	BOLT	SUS304

FEATURES:

- FACE TO FACE DIMENSION: DIN 3202-F4
- END FLANGE DIMENSION: PN16 DIN 2633
- TEST: EN 12266-1
- WITH ISO 5211 MOUNTING PAD
- INVESTMENT CASTING BODY
- BLOW-OUT PROOF STEM / FULL PORT
- LEVER OPERATED
- MATERIAL: STAINLESS STEEL 316/ CF8M
- LOCKABLE HANDLE

PRESSURE TEMPERATURE RATINGS



SIZE NB	PART No	d	D	C	G	f	T	N- M	L	H	H1	W	W1	ISO 5211	E	MA	Kg
1/2	FLBV1608	15	95	65	45	2	16	4- 14	115	72	16.5	123	6.5	F03	36	M5	2.5
3/4	FLBV1612	20	105	75	58	2	18	4- 14	120	76	16.5	123	6.5	F03	36	M5	3.5
1	FLBV1616	25	115	85	68	2	18	4- 14	125	92	23.5	183	9.5	F04	42	M5	4.5
1 1/4	FLBV1620	32	140	100	78	2	18	4- 18	130	95	21.0	153	8	F04	42	M5	6.0
1 1/2	FLBV1624	40	150	110	88	3	18	4- 18	140	125	37.5	246	12	F07	70	M8	7.0
2	FLBV1632	50	165	125	102	3	20	4- 18	150	132	37.5	246	12	F07	70	M8	10.0
2 1/2	FLBV1640	65	185	145	122	3	18	4- 18	170	166	47.0	285	16	F07-F10	70-102	M10	14.5
3	FLBV1648	80	200	160	138	3	20	4- 18	180	176	47.0	285	16	F07-F10	70-102	M10	19.0
4	FLBV1664	100	220	180	158	3	20	8- 18	190	189	47.0	385	16	F07-F10	70-102	M10	32.0