

CSE Diaphragm Valve

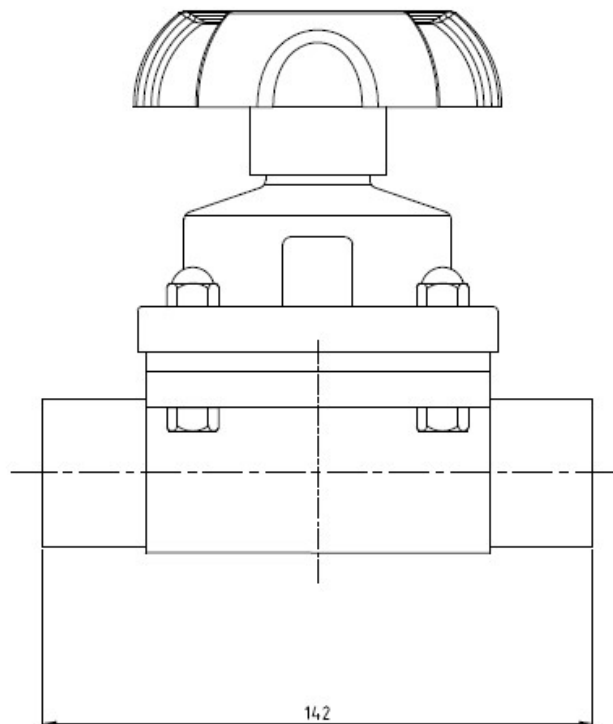
Stainless Steel Body, Bonnet & Plastic Handle

Specification

- Forged 316L Body
- EPDM/PTFE Diaphragm
- Clamp End Connections
- Normal Open/Normal Close
- Diaphragm Temp $-10^{\circ} \sim 150^{\circ}\text{C}$
- Max Pressure: 10 Bar

Finish:

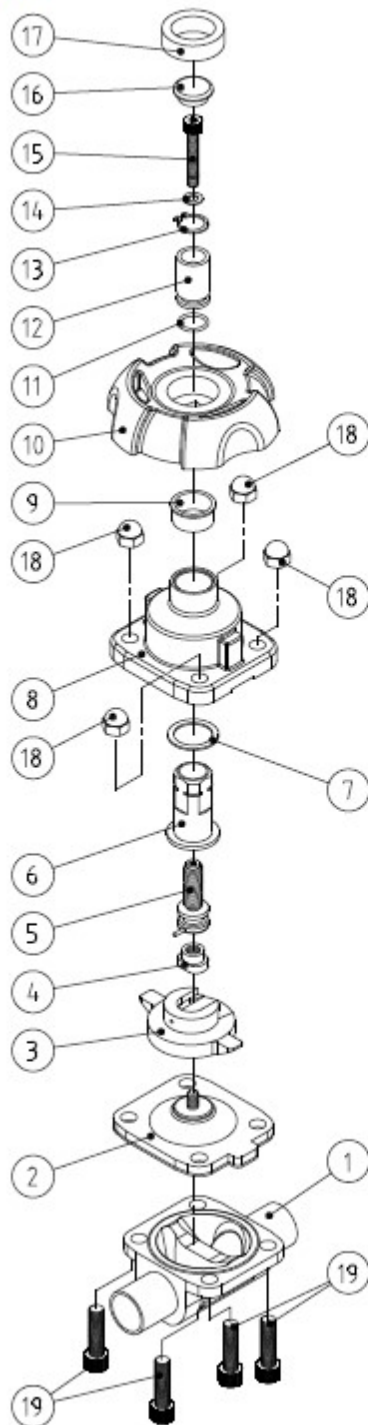
- SF1: ID polished to $Ra < 0.5\mu\text{m}$
- SF4: EP finished to $Ra < 0.38\mu\text{m}$
- ID/OD mirror polished & ID $Ra < 0.5\mu\text{m}$ sand blasted



CSE Diaphragm Valve

Stainless Steel Body, Bonnet & Plastic Handle

Manual-



Parts List

Item	Parts Name	QTY	Material
1	Body	1	SUS316L
2	Seal	1	EPDM+PTFE
3	Seat	1	SUS304
4	Screw	1	SUS304
5	Blot	1	SUS304
6	Blot sleeve	1	Cu
7	Seal	1	PTFE
8	Bonnet	1	SUS304
9	Sleeve	1	PTFE
10	Handwheel	1	NYLON 66+30% GF
11	O-Ring	1	NBR
12	Positioning indee	1	MC(Blue)
13	Circlip	1	SUS304
14	Washer	1	SUS304
15	Screw	1	SUS304
16	Cover	1	MC(Blue)
17	CAP	1	NYLON 66+30% GF
18	Nut	4	SUS304
19	Screw	4	SUS304