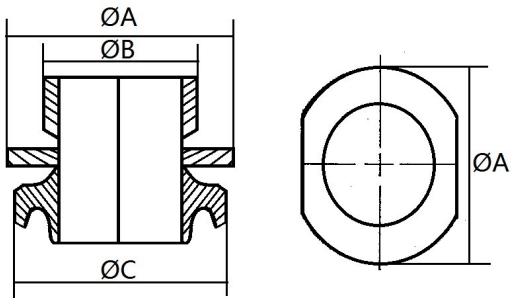


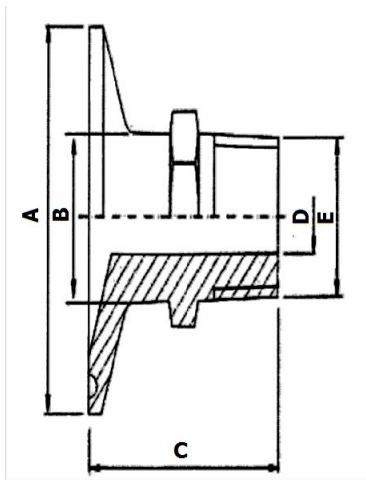
BSP Adaptors

RJT Male/ BSP Male



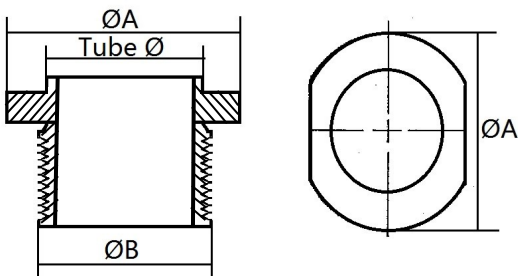
SIZE		ØA	ØB	ØC	Code
Inch	mm	mm	mm	mm	
1"	25.4	50	33.7	45.7	A105-10
1 1/2"	38.1	65	48.3	58.4	A105-15
2"	50.8	75	60.3	72.7	A105-20
2 1/2"	63.5	100	76.1	85.4	A105-25
3"	76.2	110	88.9	98.1	A105-30

Clamp / BSPT Male



SIZE		ØA	ØB	ØC	ØD	ØE	Code
Clamp	BSPT						
Inch	Inch	mm	mm	mm	mm	mm	
1"-1.5"	0.5	50.5	22.0	40	9.5	21.3	E105-050
1"-1.5"	0.75	50.5	27.0	45	15.8	26.9	E105-075
1"-1.5"	1	50.5	34.0	50	22.2	33.7	E105-10
1"-1.5"	1.5	50.5	38.1	50	34.9	48.3	E105-15
2"	1	64.0	50.8	50	22.2	33.7	E105-18
2"	1.5	64.0	50.8	50	34.9	48.3	E105-19
2"	2	64.0	50.8	55	47.6	60.3	E105-20

BSP Weld Prep



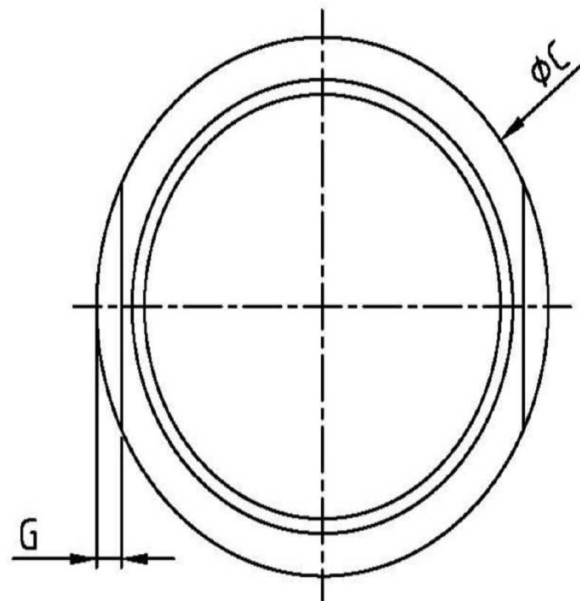
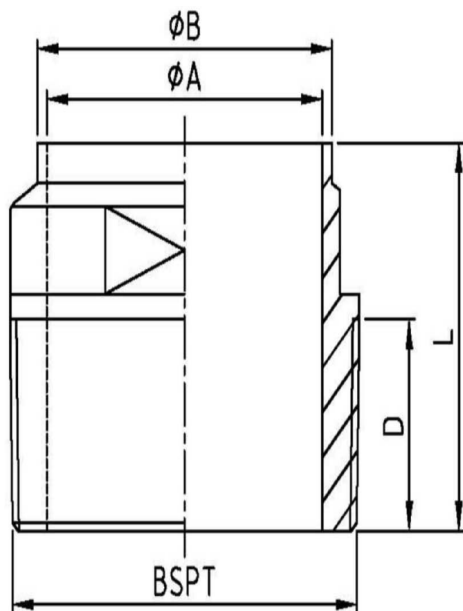
SIZE		ØA	ØB	Code
Inch	mm	mm	mm	
0.5"	12.7	28	21.3	S099-05
0.75"	19.05	37	26.9	S099-075
1"	25.4	50	33.7	S099-10
1 1/2"	38.1	65	48.3	S099-15
2"	50.8	75	60.3	S099-20
2 1/2"	63.5	100	76.1	S099-25
3"	76.2	110	88.9	S099-30

Note; With our in house fabrication facility we can make a wide range of bespoke adaptors to cater to your individual needs, for more information please contact the sales office.

BSP Adaptors

BSP Weld Prep

SIZE		ϕA	ϕB	ϕC	D	G	Code
Inch	mm	mm	mm				
1"	25.4	22.1	25.4	33.4	22.4	2.6	S099-10
2"	50.8	47.5	50.8	60.3	25.1	3.3	S099-20



Note; On the 1" and 2" BSP Weld Preps (S099-), we stock two different styles of adaptors. Please specify which type of adaptor you would like.